

CELLULAR PHONES

BOATPHONE

SPARE BATTERIES

Vehicle Installations

SEC

OKI 810

995

-with hands-free microphone and antenna

Technophone MC985A

395

-also acts as 3 watt booster for PC305A

The above prices include installation.

Transportables

OKI 891

1,395

Mitsubishi 1500 PTK

1,395

-with built-in interface for fax or laptop

Handhelds

Technophone PC305A

695

Technophone PC415

1,095

Audiovox MVX 525 *

995

Motorola PT900 flip-phone

1,195

Audiovox MVX 600

1,495

Tel# Comm TC2001

1,395

OKI 1150

1,695

Motorola MicroTac Lite

1,895

Note: Most handhelds come with a spare battery, leather case and desk-top charger, with the exception of the TC2001 which needs only one battery. *The MVX525 desktop charger is an extra \$200.

Note: Above price includes permanent subscription to BOATPHONE service. Price quoted requires payment of first year's Monthly Service Charge in advance (ECS900). Usage disposal is required.

PRICE LIST SEC

Duty Paid

September 1994

LEATHER CASES

Technophone PC305A

50

Motorola flip-phone slim line

130

Technophone PC415

50

Mitsubishi 155 PTK

235

OKI 891

170

OKI 1150 slim line

165

OKI 1150

50

OKI 1150 hi-cap

180

Motorola Flip phone

45

OKI 891

300

ANTENNAS

CIGARETTE LIGHTER CORDS

Valor 5db glass mount for cars

80

Panasonic TP500

45

OFA 3db lip mount for cars

175

OKI 891

95

Handheld rubber ducky

30

Motorola Flip phone

60

Yaqi 9db directional for houses

200

Technophone in-car charger

195

The above antenna prices include installation.

INTERFACES

POWER SUPPLIES

Auxcell interface for Audiovox, OKI, to connect fax, PC, etc.

1,035

Astron 110vac - 12vac

160

OKI Remote Link Kit

849

Astron 220vac - 12vac

175

for OKI 891 transportable to connect fax, etc.

Stat Power 12vac - 110vac

295

Technophone 3 watt cable link to connect handheld to MC900 cellphone

495

Exhibit xv

**A COMPARISON OF WORLD-
WIDE CELLULAR PHONE RATES**

Rates quoted in SEC for local subscribers in the indicated service area at current rates of exchange.

Country Monthly Service Charge in SEC Rate per Minute

Singapore	83	0.33
Pakistan	100	0.40
Australia	63	0.52
Switzerland	116	0.59
Chile	55	0.78
Trinidad	109	0.85
Germany	127	0.89
Netherlands	84	0.94
Norway	16	0.96
Antigua	50	1.10
Barbados	61	1.14
Denmark	33	1.15
Belgium	231	1.16
Luxembourg	385	1.16
Sweden	68	1.17
Portugal	107	1.25
Spain	378	1.28

Country Monthly Service Charge in SEC Rate per Minute

St. Maarten	81	1.35
Ireland	100	1.37
Ontario	42	1.58
Quebec	42	1.58
France	118	1.73
USVI	59	2.03
Finland	12	2.03
Japan	393	2.11
Turkey	13	3.40

US CELLULAR PHONE RATES

Bellsouth Nashville, TN	86	0.81
Ameritech Chicago, IL	54	0.91
Blue Ridge Rural NC	39	0.94
Blue Grass Rural KY	54	0.94
PacTel Atlanta, GA	92	0.94
Bledsoe Rural TN	95	0.94
BeltSouth Chattanooga, TN	95	0.94
Blue Ridge Rural VA	94	0.97

State Monthly Service Charge in SEC Rate per Minute

Brazos Rural TX	53	1.08
Brown County Rural WI	54	1.08
Antigua	50	1.10
Cellular One Miami, FL	162	1.08
Cellular One Boston, MA	57	1.18
Cellcomm Rural WI	54	1.35
Myriex Boston, MA	51	1.40
Cellular One Detroit, MI	59	1.62
Cellular One New York, NY	132	1.75
PacTel San Diego, CA	54	1.99

Note: Survey data based on information provided by independent third parties, available in the public domain.

BOATPHONE SERVICES

CUSTOMER SERVICE

Boatphone Customer Care Operators are standing by, seven days a week, to help customers get the most out of their cellular phone. Just dial 0 and "SEND" to reach the Customer Care Operator in your location.

SALES

Boatphone sells and installs high quality cellular phones, including the latest handset, transceiver and mobile phone. A variety of accessories, including tax machines, antennas and cases, are also available.

RENTALS

Boatphone rents a variety of cellular equipment on a short or long-term basis. Whether it is a phone for personal communications, or a cellular phone for a major event, call Boatphone.

ROAMING

Cellular phones in use in the United States, Canada, or any other AMPS cellular system may get instant access to Boatphone.

Boatphone permanent land customers may use their phone in any other Boatphone territory. All charges are reflected on the customer's monthly bill. Land-based customers "roaming" to other Boatphone territories will be charged at Permanent Land Roamer Rates (available from the Boatphone office).

BOATPHONE OFFERS THESE CUSTOM CALLING FEATURES

FREE
TO ITS CUSTOMERS UPON REQUEST

CALL WAITING

An audible tone alerts you to another incoming call when you're using the phone. This will be billed as two calls.

CALL FORWARDING

Portable transfer of incoming calls to an alternate number. Call Forwarding is billed at the appropriate BOATPHONE rate from the customer's phone to the forwarded location.

CONFERENCE CALLING

Allows connection of a third party to a call in progress. This will be billed as two calls.

PERMANENT LAND USAGE RATES

Service from Antigua and Barbuda

CALLING TO [RATES ARE PER MINUTE ECS] ALL DAY

Local calls (Antigua & Barbuda, Montserrat)	1.10
Incoming Calls	1.10
Near Islands*	3.75
Other Caribbean Islands	7.50
Continental USA & Canada	7.50
Europe	10.00
South America	10.00
All Other International Calls	12.50
Incoming collect calls	14.90
Directory Enquiries (A/PAU)	1.10
Local Emergency Number	FREE
BOATPHONE Operator	FREE
Other Island Numbers:	
Guadeloupe, St. Kitts & Nevis, St. Lucia, St. Vincent & the Grenadines, Antigua, St. Barts, St. Eustachius, St. John, Anguilla, Dominica.	

PERSON-TO-PERSON

The Boatphone Operator must place all person-to-person calls. There is a three minute minimum, plus the following surcharge on each call:

TO	CHARGE
Near Islands	8.00
Other Caribbean Territories	13.50
Continental USA & Canada	13.50
Europe	13.50
South America	13.50
All Other International Calls	19.00

LAND USER SERVICE CHARGES

Monthly Service Charge	ECS \$9.
One-Time Subscription Fee	135.
The subscription fee entitles the customer purchasing that equipment from Boatphone.	

VOICE MAIL

Monthly Service Charge
Incoming Messages
Message Check (per minute)

FREE
FREE
ECS\$.10

ABOUT BOATPHONE RATES

These rates apply to Antigua & Barbuda residents with a phone programmed with an Antigua cellular phone number. All outgoing international calls are subject to a 20% Government tax. All customers are subject to credit approval; a cash deposit may be required.

Boatphone's charges include both cellular airtime and local or long distance telephone charges in one minute increments. For Boatphone charges - for collect calls and calling cards - refer to the rates listed.

Billing for direct-dialed calls begins when the called party answers. There is no charge for busy or unanswered calls. You are billed in one minute increments. Adverse weather conditions or terrain may affect service. Boatphone cannot issue credit for interrupted calls.

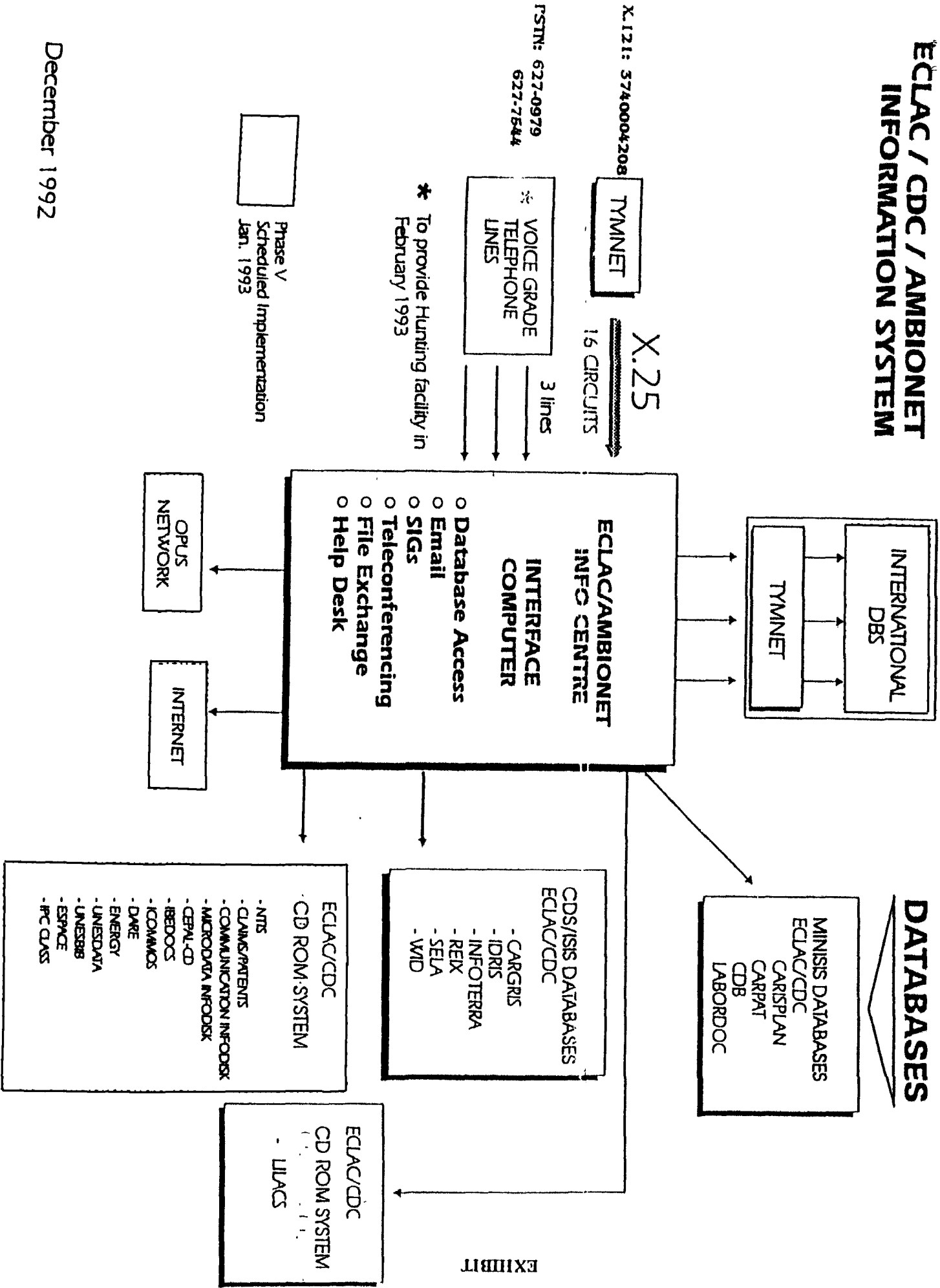
Boatphone's liability with respect to telephone service is limited to the actual call in question. All service subject to Boatphone Terms & Conditions, available upon request.

VOICE MAIL

Ever wished you had an answering machine attached to your BOATPHONE? Now you do! With BOATPHONE'S "Voice Mail" service, you never miss another call if for any reason, you do not answer your phone, your "Mailbox" answers for you. You can record your own personal greeting, and change it as often as you want. And a personal security code protects access to your private "Mailbox". Call your BOATPHONE office today to have your "Mailbox" activated, and never miss a call!

ECLAC / CDC / AMBIONET INFORMATION SYSTEM

Exhibit xvii



EXHIBIT

22 Watt TRANSMITTER (Contd.)

		power supply or battery (limits 11.0 to 14.0 volts)
FREQUENCY STABILITY	± 2 KHz
HARMONIC SUPPRESSION	70 dB (with standard filter)
LOW FREQUENCY DISTORTION	0.1 %
SIGNAL TO NOISE RATIO	70 dB unweighted
FREQUENCY RESPONSE	20 Hz – 15 KHz, +0.5 dB – 2.0 dB
INPUT LEVEL	Adjustable –10 dBm to +10 dBm
INPUT CONNECTOR	Unbalanced jack (standard) Balanced Cannon XLR available
AMBIENT TEMPERATURE RANGE:	-10 to +40° Centigrade
MAXIMUM HUMIDITY	90%
MAXIMUM ALTITUDE	3000 meters
INDICATORS	Power output, Audio level bar-graph (10 steps of 3 dB)
PROTECTION		
Standard	Reverse polarity, Excessive temperature
Option	High standing wave ratio

OPTIONS AVAILABLE:

- | | |
|--|--|
| a) Stabilized mains power unit, 115 or 230 volts, 50/60 Hz input | e) Frequency ranges 68 – 150 MHz available |
| b) Internal digital stereo encoder requiring no adjustments. | f) Rack Mount |
| c) Automatic switch for relay operation | |
| d) Output power / SWR meter | |

100 Watt Power Amplifier

POWER OUTPUT	100 Watts (typical) into a 50 Ohm load
DRIVE INPUT POWER	10 Watts
POWER GAIN	10 dB typical
BANDWIDTH	2 MHz
FREQUENCY RANGE	87.5 to 108 MHz
POWER SUPPLY	13.8 volts DC, 15 Amps from stabilized power supply or battery (limits 11.0 to 14.0 volts)
AMBIENT TEMPERATURE	-10 to +40° Centigrade
MAXIMUM HUMIDITY	90 %
MAXIMUM ALTITUDE	3000 meters
COOLING	Low-noise long life DC fan fitted
INDICATORS	Power output, Audio level bar-graph (10 steps of 3 dB)
AC POWER UNIT	220-250 volts 50/60 Hz input, 13.8 volts, 24 Amps stabilized input, cooled by low-noise long life AC fan

OPTION AVAILABLE:

Frequency ranges 68 – 150 MHz available

For further information contact:

Jocelyne Josiah,

Regional Communication Adviser, UNESCO Kingston

25 Dominica Drive, Kingston 5

Tel: 929-7087-9. Fax: 929-8468

Exhibit xviii
Developing a Disaster Preparedness Plan for the Caribbean

The CANTO Secretariat
in collaboration with
The CANTO Human Resource Development Advisory Committee /
Disaster Preparedness & Relief Sub-Group (HRD.AC / DP&R.SG)
and
The Grenada Telecommunications Limited (GRENTEL)

presents..

" Developing a Disaster Plan for the Caribbean "
(A Disaster Preparedness and Relief One Day Seminar and Simulation Exercise)

Thursday, 19th. and Friday, 20th. May, 1994
at the Rex Grenadian Hotel

Thursday, 19th. May, 1994 - Opening Ceremony

- 9.00 Grenada National Anthem /
Opening Prayer
- 9.05 Welcome Address Mr. Elvio Clijtje - SETEL Telecom Resource
& Training Center Manager
- 9.10 Opening Address Mr. Colin Little - Gen. Mgr., GRENTEL
- 9.20 Feature Address Ms. Gloria Banfield - Chair : Grenada
Disaster Council / Cabinet Secretary
- 9.40 Introductory Remarks Mr. Peter Daly - Technical Manager, CANTO
- 9.45 Session One - Mitigation Session Chair
- Pre-Disaster Planning Mr. David Sharp - President / C.E.O.
- Protection of Assets VITELCO: US Virgin Islands
- Recovery Planning
- 10.15 Questions and Discussions
- 10.30 Coffee Break sponsored by _____
- 10.45 Session Two - Incident Session Chair
- Mobilisation / Securing Facilities Mr. Tony Munroe - Managing Director
- Emergency Communications Grenada Broadcasting Corporation
Network and Facilities
- Supplementary Emergency Networks (Non-Telco)
- Resource Planning and Conservation
- 11.45 Questions and Discussions
- 12.00 Lunch sponsored by _____
- 1.30 Session Three - Response Session Chair
- Cooperation with Local Mr. Tony Buxo - Manager, N.E.R.O.
Government and Private Emergency Center, Grenada
Sector Mobilisation Plans
- Damage Survey and Reporting
- Problem and Opportunities Resulting
- Managing an Emergency Operation Centre
- Performance Review and Evaluation / Plan
- Inter Company Regional Operation
- Working with other groups e.g. CTU, CDERRA, NEMA, CMO, ITU Regional - Office,
CUB, CARICOM, GDC, GNC, NERO, CANA, CTC, NTI, ABC, WAT, INAIARSAT, Others.
- 2.30 Coffee Break sponsored by _____
- 3.45 Questions and Discussions
- 4.15 Seminar Ends
- 7.30 Dinner sponsored by _____

Friday, 20th. May, 1994 - Simulation Exercise

THE UNESCO SOLAR - PANELLED FM TRANSMITTER

the simple, reliable, economical alternative in

Community Broadcasting

FEATURES:

- Low cost, low power, high performance solid state, broad band.
- Custom made in a wide range from 10 to 100 watts – a 22-watt serves an operating range of 30km in flat country.
- Usable as a mobile link or repeater station.
- Facility to increase to some 50km in open country (100 watt) with greater power consumption.
- Valuable media alternative in Natural Disaster situations.

PRESENTATION

- Available in kit or already assembled. Assembly requires: simple antenna (made from water pipe or similar locally available material); audio source (low cost mixer).
- Digital stereo encoder available as internal option.
- Instruction manual.

OPERATION

- 12-volt battery supply – from mains adapter, vehicle battery or solar panel.
- Set frequency on transmitter switches and switch on.
- Simple voltmeter required.
- Minimal maintenance.

OPERATIONAL MODELS

- Small radio stations particularly in developing countries: Guirandurokotte Island, SRI LANKA, Apam, GHANA, Niue, PACIFIC; St. Lucia, CARIBBEAN (one transmitter of which is run entirely on solar energy) Kingdom of Tonga, PACIFIC; Cape Verde, INDIAN OCEAN; and The Philippines, etc.

TECHNICAL SPECIFICATIONS

22 Watt TRANSMITTER

January 1991 Model

POWER OUTPUT	22 Watts (typical) into a 50 Ohm load
FREQUENCY RANGE	87.5 to 108 MHz in 50 KHz Incremental steps
POWER SUPPLY	13.8 volts, 4 Amps DC from stabilized

Exhibit xx

22

under this Act, continue to have effect in accordance with the terms thereof and subject to the provision of this Act.

MEMORANDUM OF OBJECTS AND REASONS

Telephonic services are provided in Jamaica by virtue of a licensing regime established under the Telephone Act which was passed in 1893. The Act contemplates a service providing voice telephony only and a system in which the transmission of sounds is by wire.

The necessity for new legislation arises for two main reasons. Firstly, with technological advances in telecommunications, there are, in addition to wire, other means of transmission of sound which can be used in a telephonic system. The Telephone Act does not contemplate this possibility. Secondly, the provision of telephonic services is, today, only one of the features of a telecommunication service. Modern telecommunication systems permit the conveyance of messages in the form of speech, visual images and other signals. The licensing regime under the Telephone Act was not designed to regulate the provision by a licensee of general telecommunication services.

This Bill therefore seeks to repeal the Telephone Act and to replace it with a new law which establishes a licensing regime for the provision of telecommunication services (including telephonic services) to Jamaica. The Bill prohibits the running of a telecommunication system except in accordance with a licence issued by the Minister. A licence may be exclusive or non-exclusive and may be granted subject to such terms and conditions as the Minister thinks fit. A licence may be granted for a period not exceeding forty years and may be renewed. Provision is made for supply to the public of telecommunication services by persons designated public telecommunications operators. The running of telecommunication systems in specified circumstances is exempt from the licensing requirement and provision is made for the grant of a special licence for the supply of telecommunication services to the Government for purposes of national security.

ROBERT PICKERSGILL,
Minister of Public Utilities, Mining and Energy.

Exhibit XXI**BIBLIOGRAPHY**

A Study of the Early Warning Capabilities of the CMO and CDERA, April 1994

All Island Telephone License 1988, issued under the Telephone Act of 1893 - Section 23, Control in emergencies, Jamaica

Caribbean Communications Study - UNDP, ECONOTEC Inc. July 1993

Caribbean Pilot Project on Access to Telematics Facilities in Sectors of Public Concern - UNESCO

Concept and Initial Implementation of IERRIS - draft, 3 Sept. 1992

Draft Handbook for CANTO on Disaster Preparedness and Relief, CANTO (DP&R. SG), May 1991

Emergency Plan & Instructions for Disaster Situations, NEMA 1994-1995

Emergency Telecommunication Resources in CDERA Member States, CDERA, March 1993

Emergency Telecommunications Procedures Manual, CDERA, Dec. 1993

Guidelines for a National Disaster Telecommunications Plan, CDERA, Dec. 1993

Progress Report - Caribbean Inmarsat Trials, CDERA

Proposed Telecommunications Act 1994 - Memorandum of Objects and Reasons, Ministry of Public Utilities, Mining and Energy, Jamaica

Regional Computer-based Networking and the Internet: ECLAC/CDCC's perception, Dale Alexander, 1 July 1994

Report on the IERRIS Workshop - Geneva, 2-4 Dec., 1992

Report on VITA Training, 27 October, 1993, Rosemond W. James

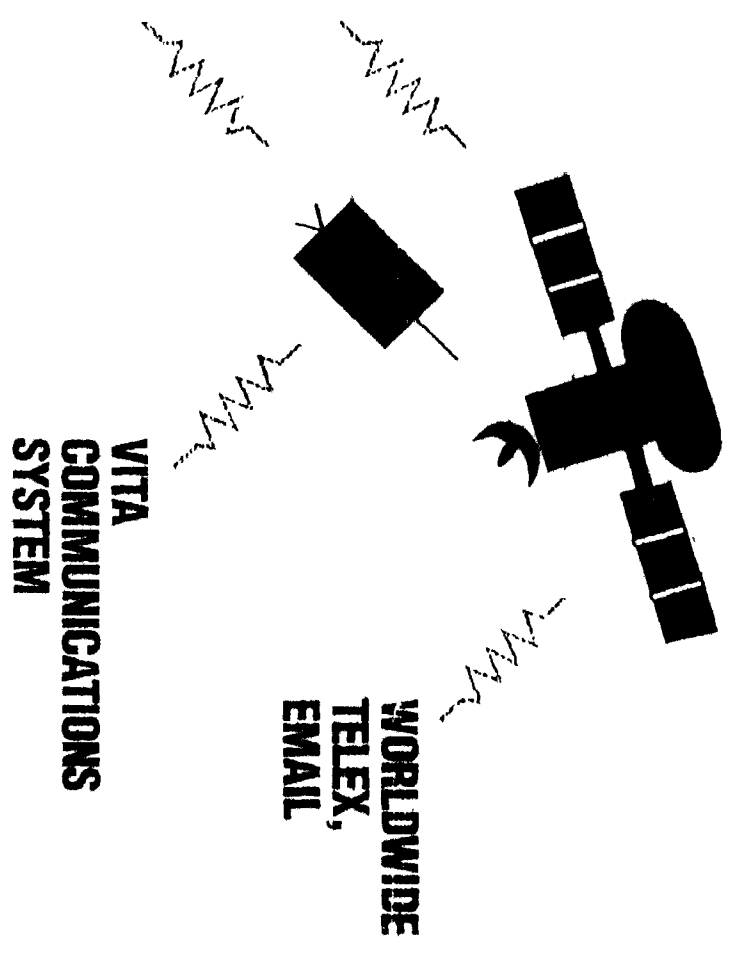
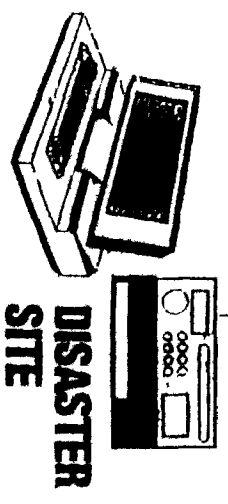
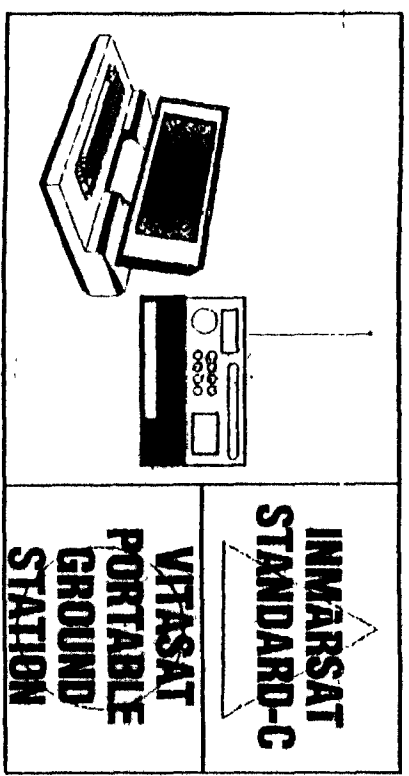
SIDSNET Feasibility Study Report - draft, UNDP, 21 August 1994

Summary of Discussions and Recommendations - CDERA Information System & Technology Advisory Committee Meeting, CDERA, 18 Sept. 1993

UN/ECLAC AMBIONET Evaluation, Sylvester Engineering Ltd.

The following information is provided for the purpose of providing information to the user of the system. The information is provided for the purpose of providing information to the user of the system.

EMERGENCY OPERATIONS CENTER



The following information is provided for the purpose of providing information to the user of the system. The information is provided for the purpose of providing information to the user of the system.